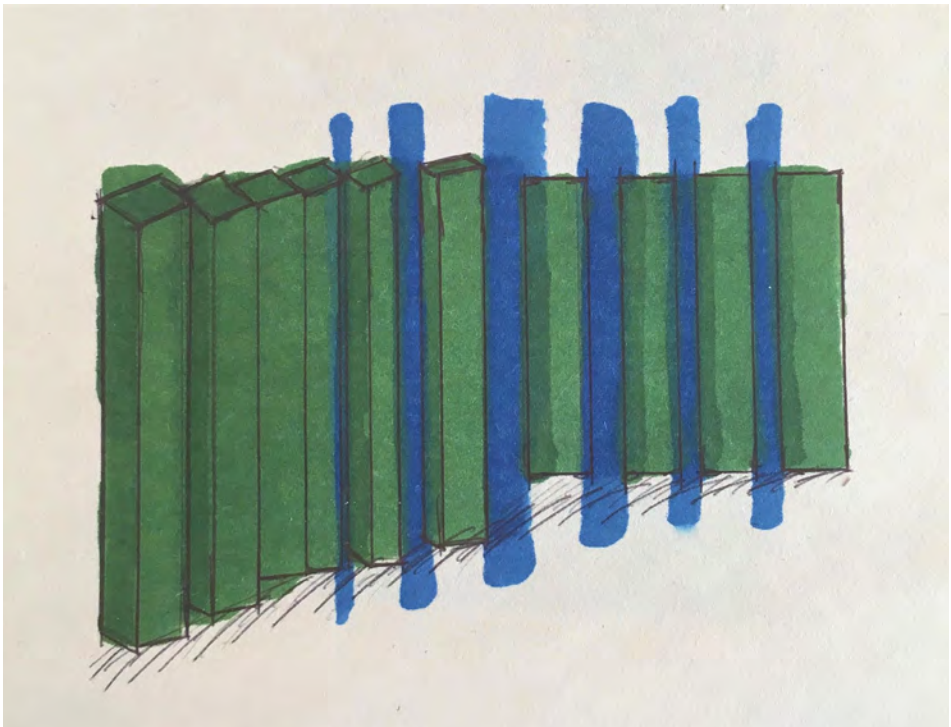
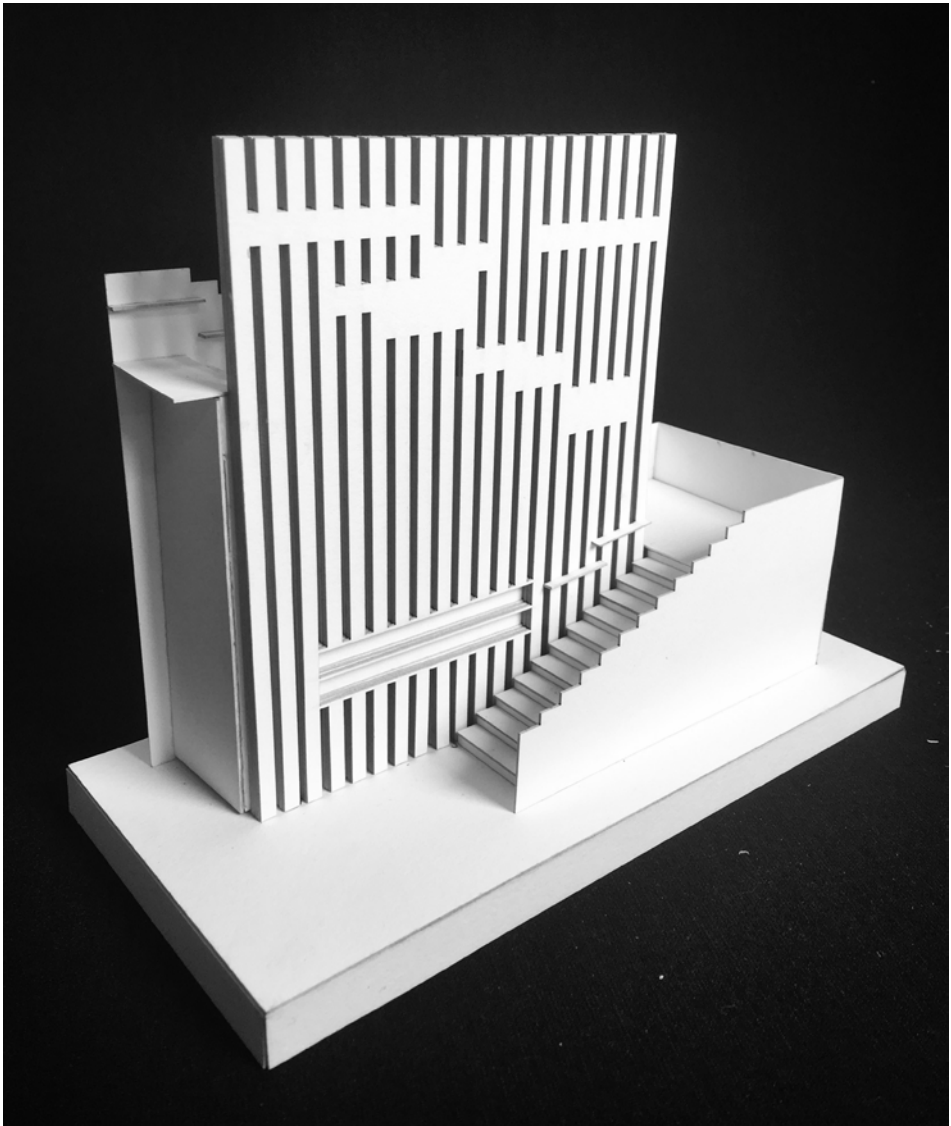


First Year Design

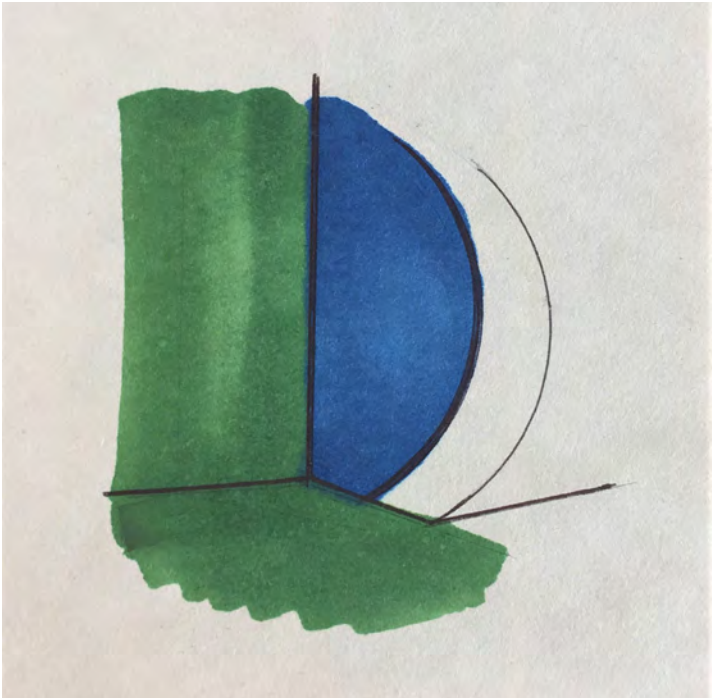
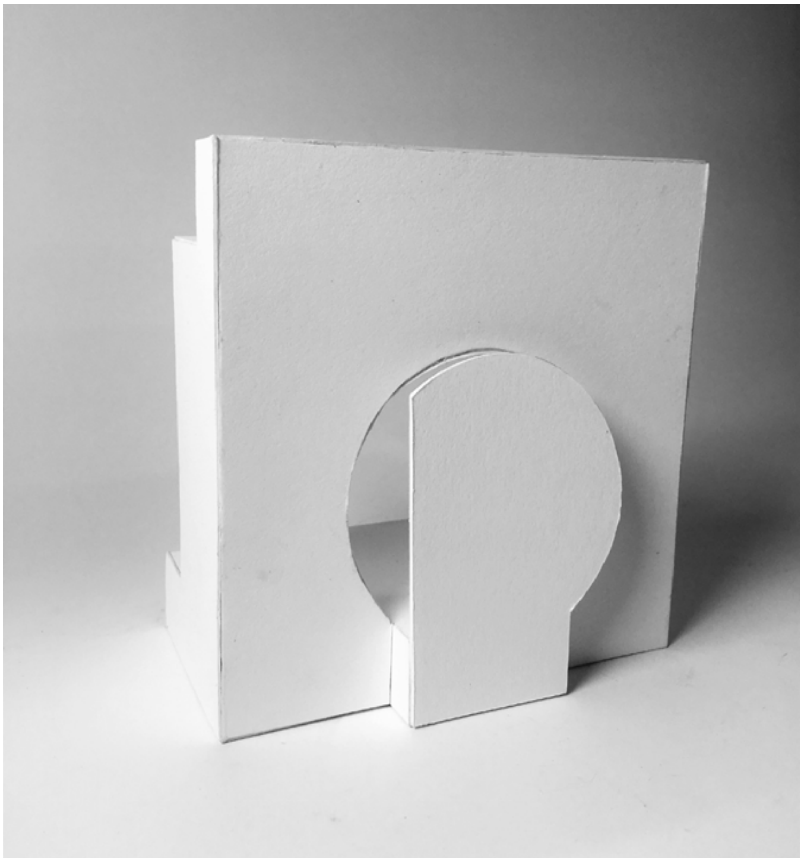
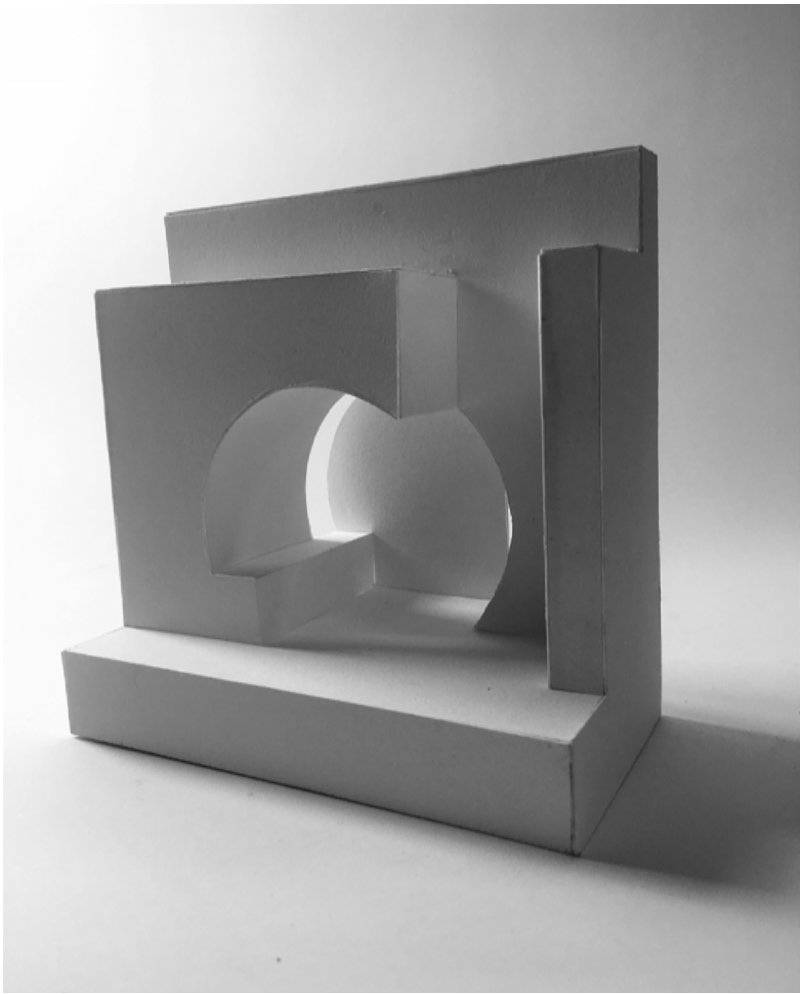
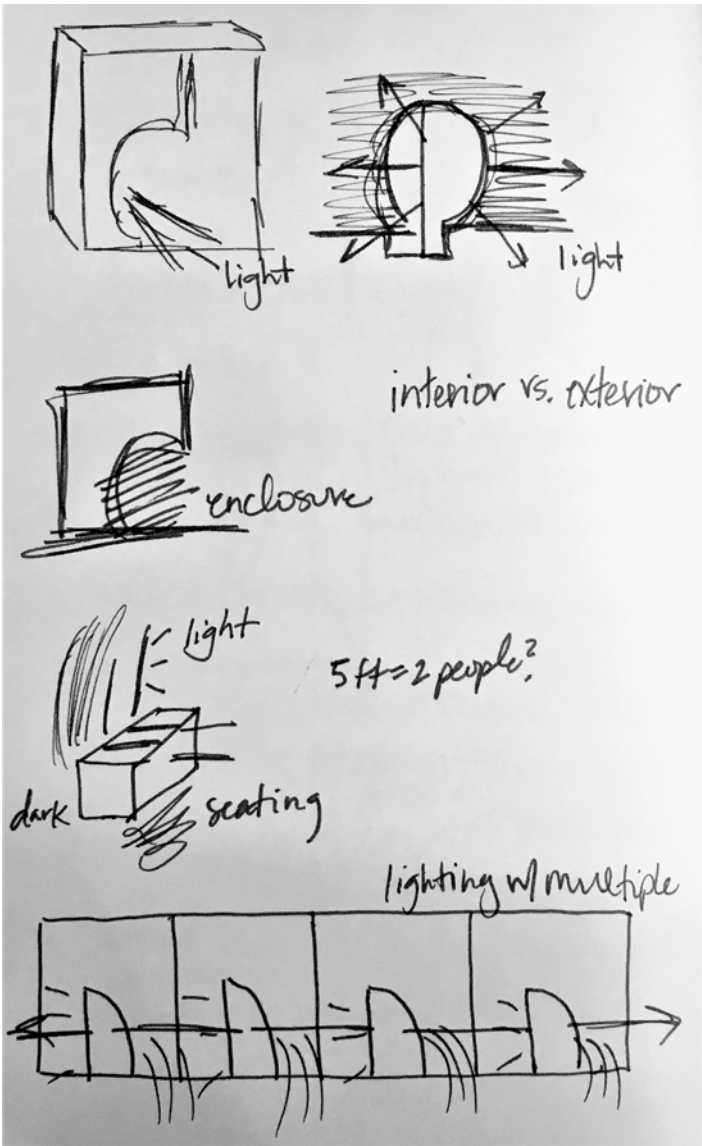


Concept



Model

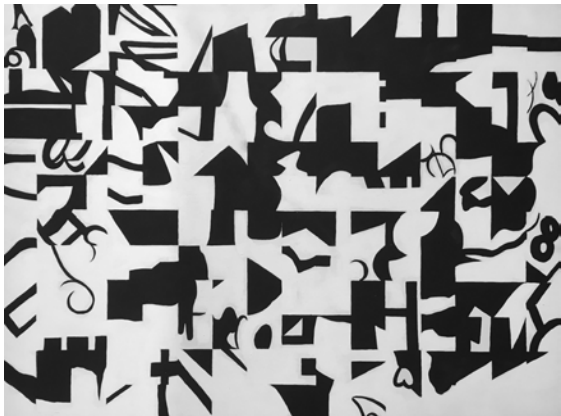
Personal Space Design: Relationship Between Interior and Exterior



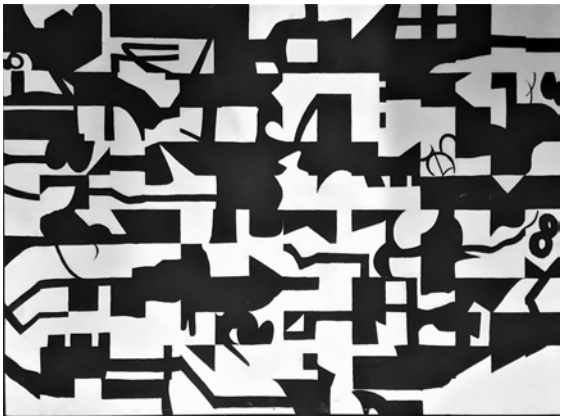
Process

Model

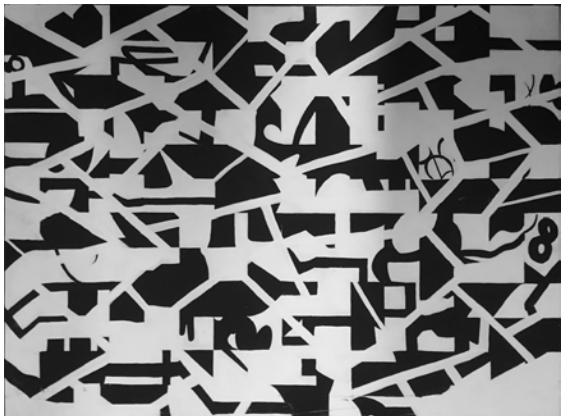
Palimpsest: Relationship Between Figure and Ground



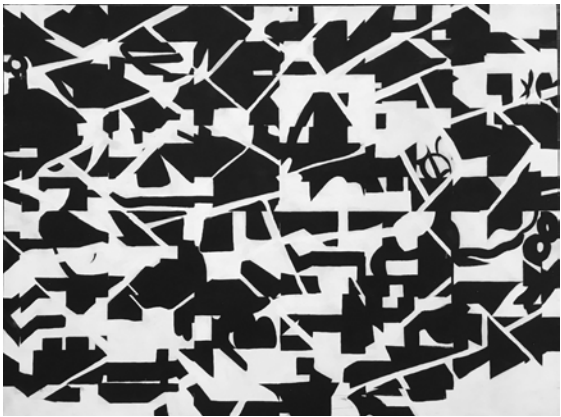
1



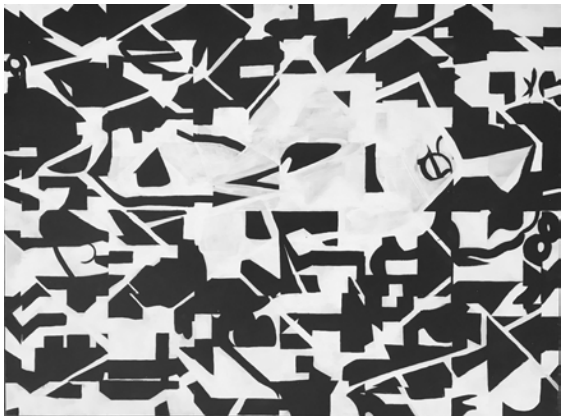
2



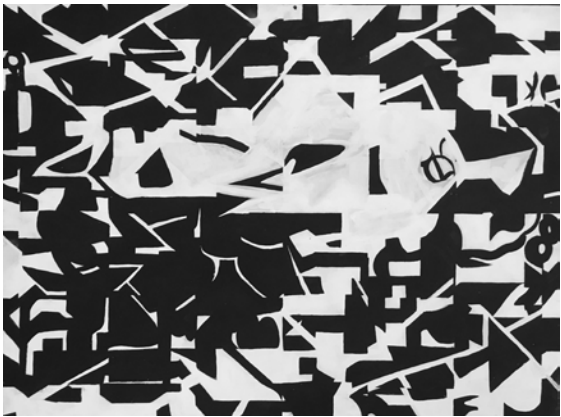
3



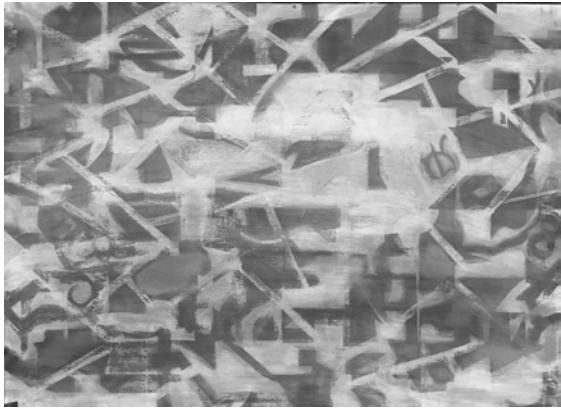
4



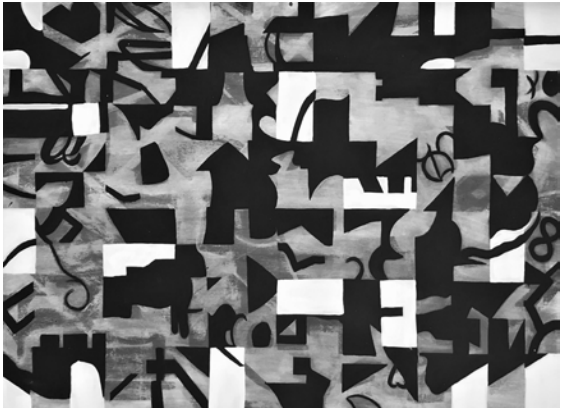
5



6

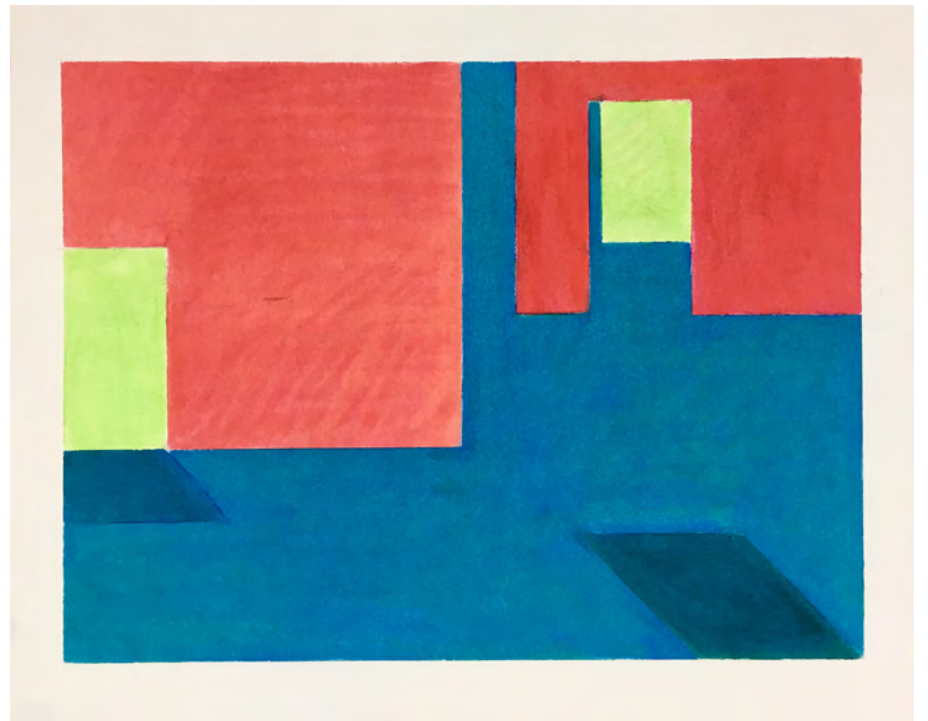
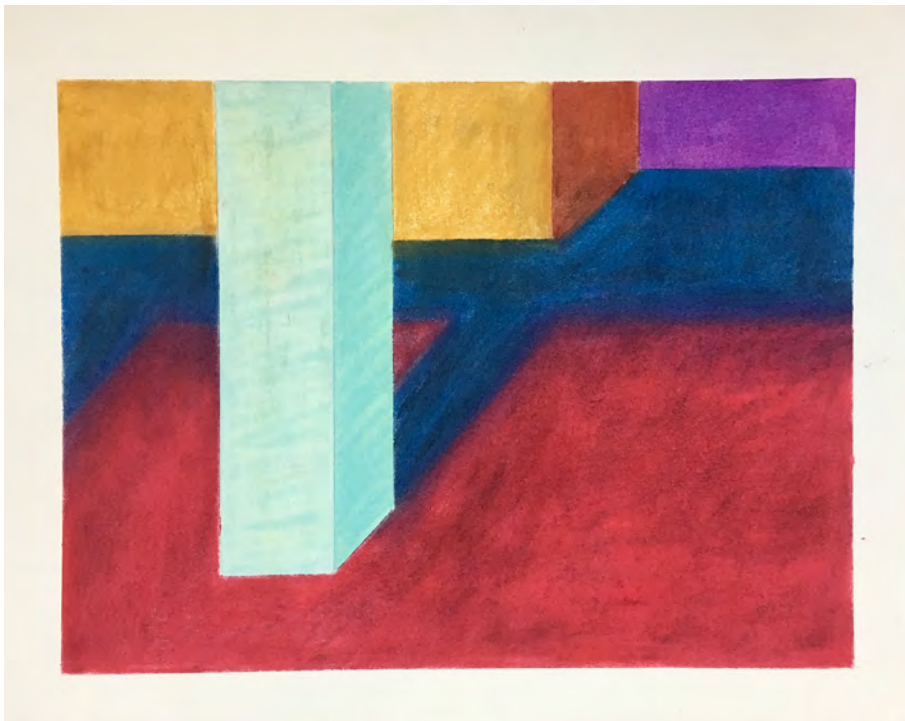
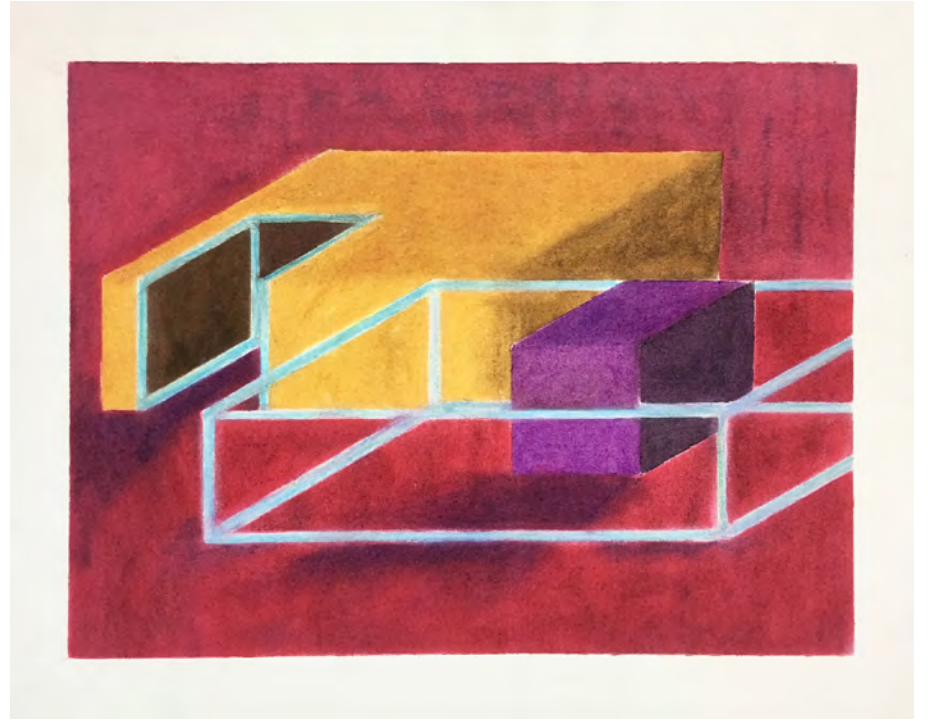
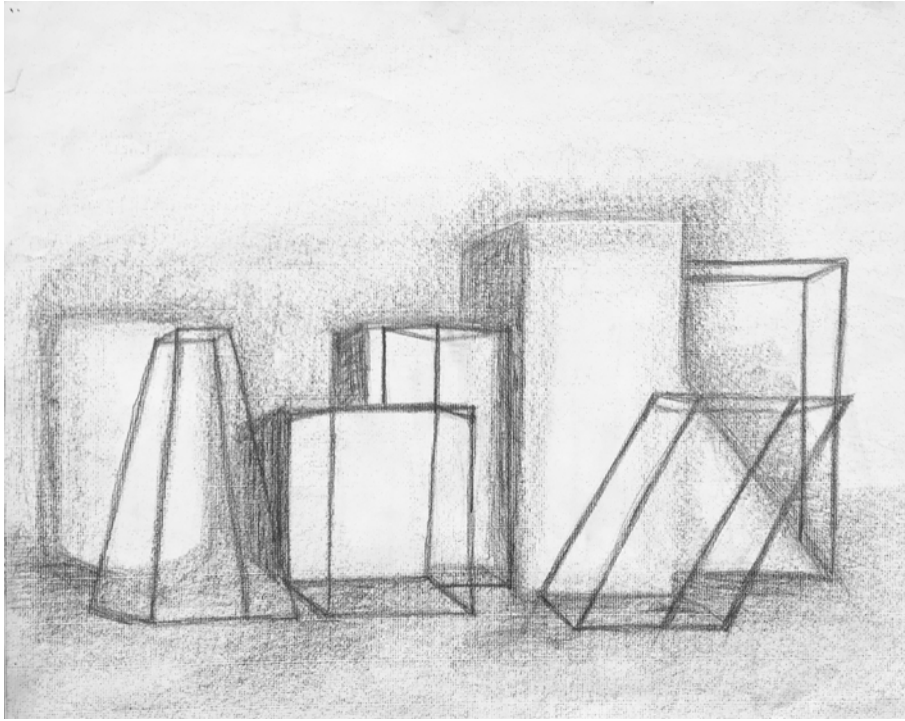


7



8

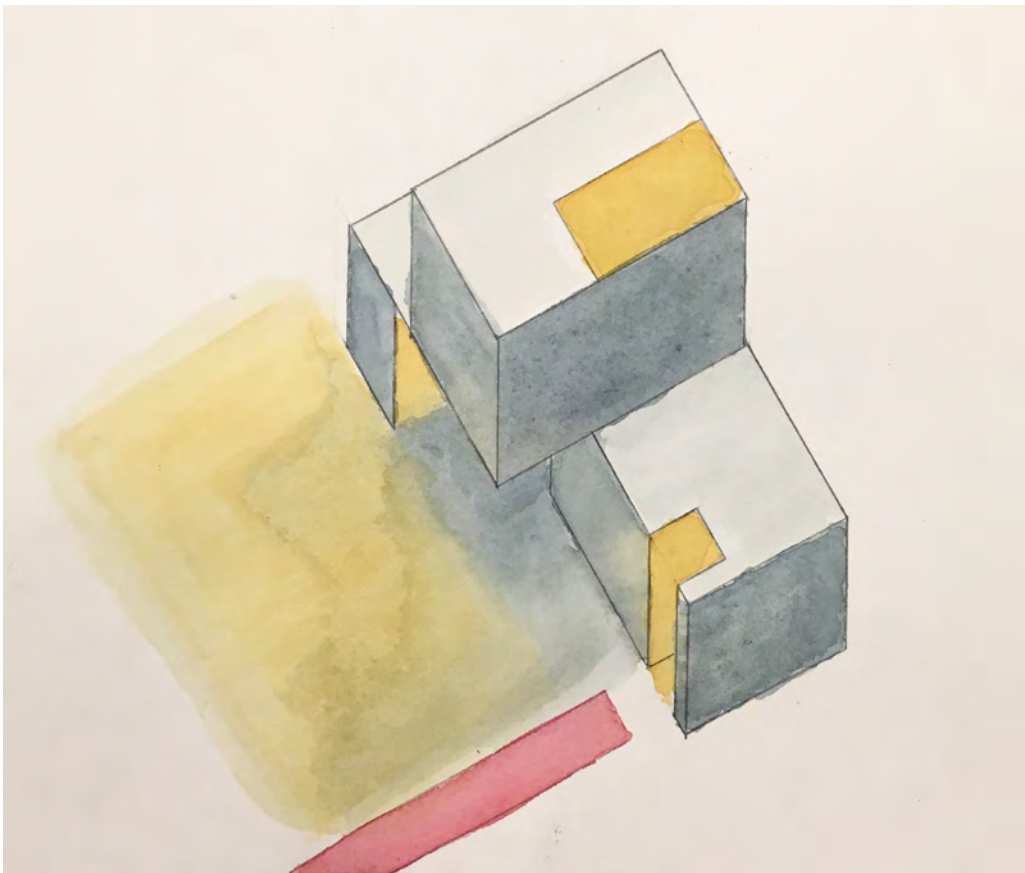
Drawings: Studying Value and Layers



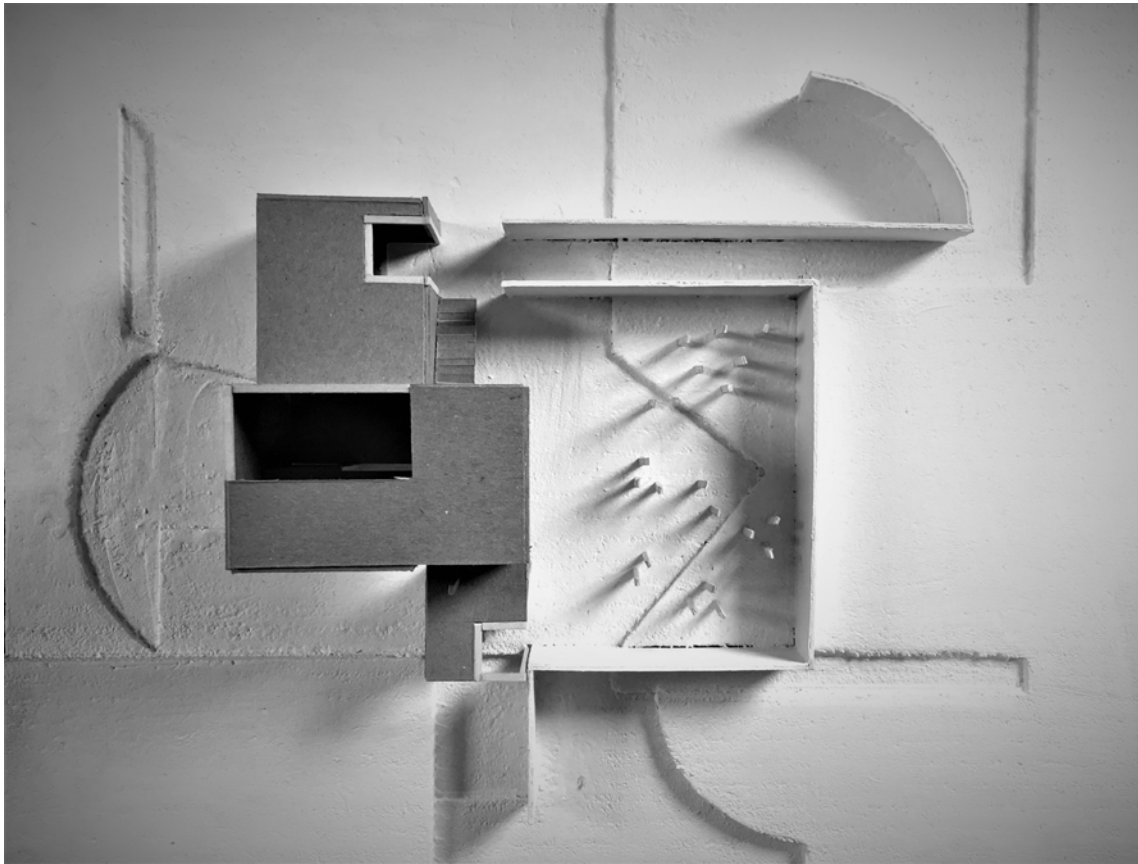
Conceptual Final: Studying Space and Relationship Between Public and Private



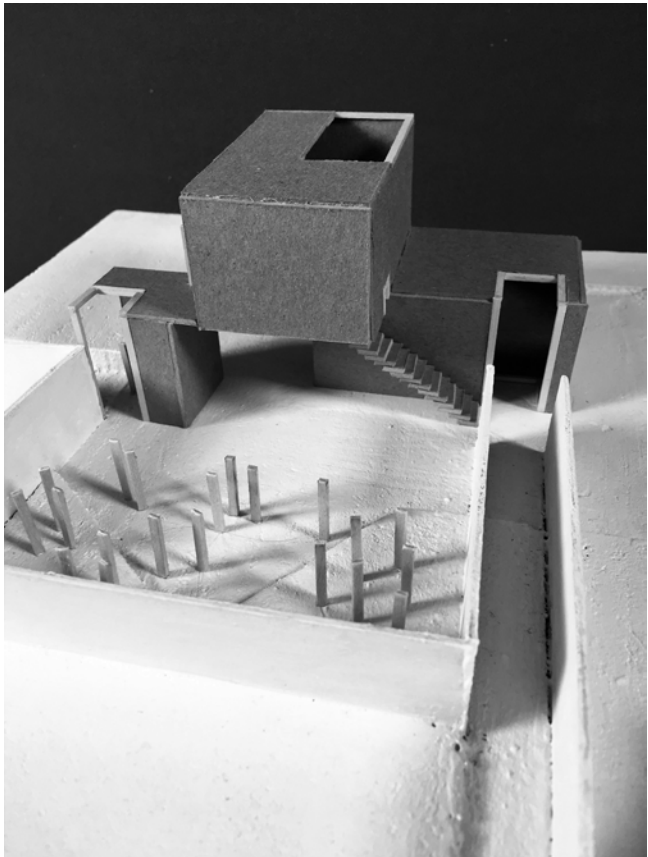
Watercolor Process



Watercolor Process



Conceptual Model



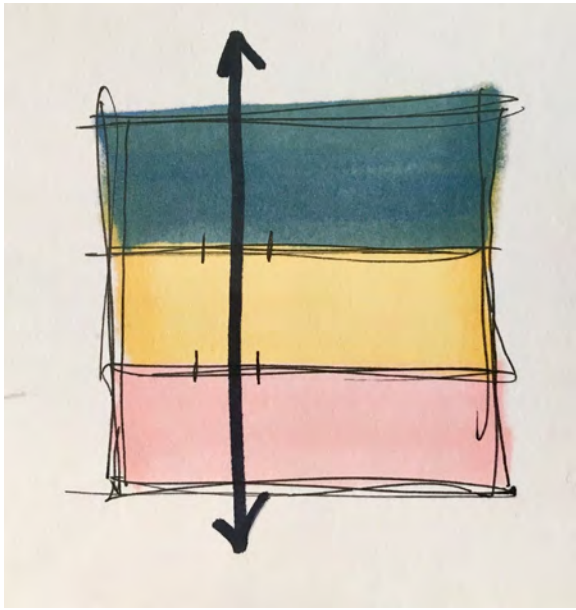
Conceptual Model

Second Year Design

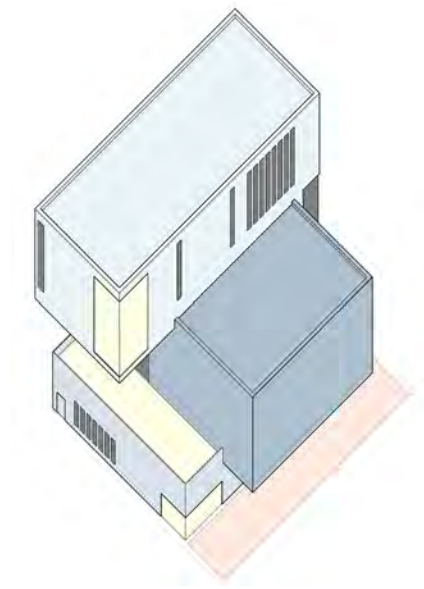
Overlapping Extrusions

Chicago Arts Center

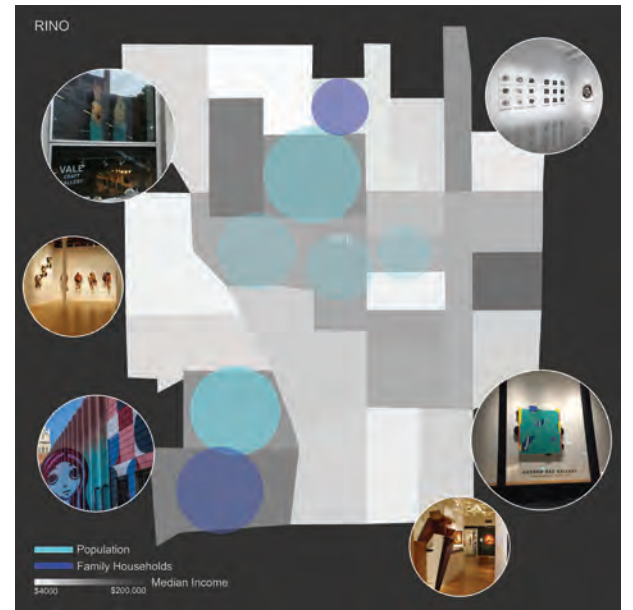
Three Forms with a Central Circulation Space



Process

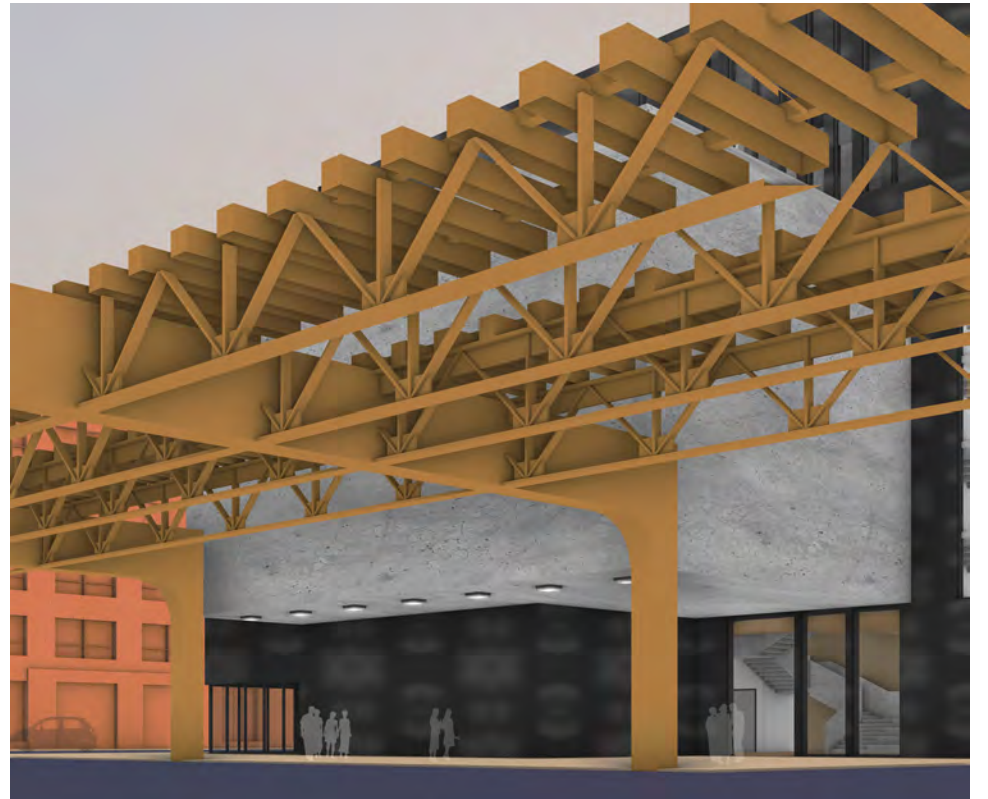


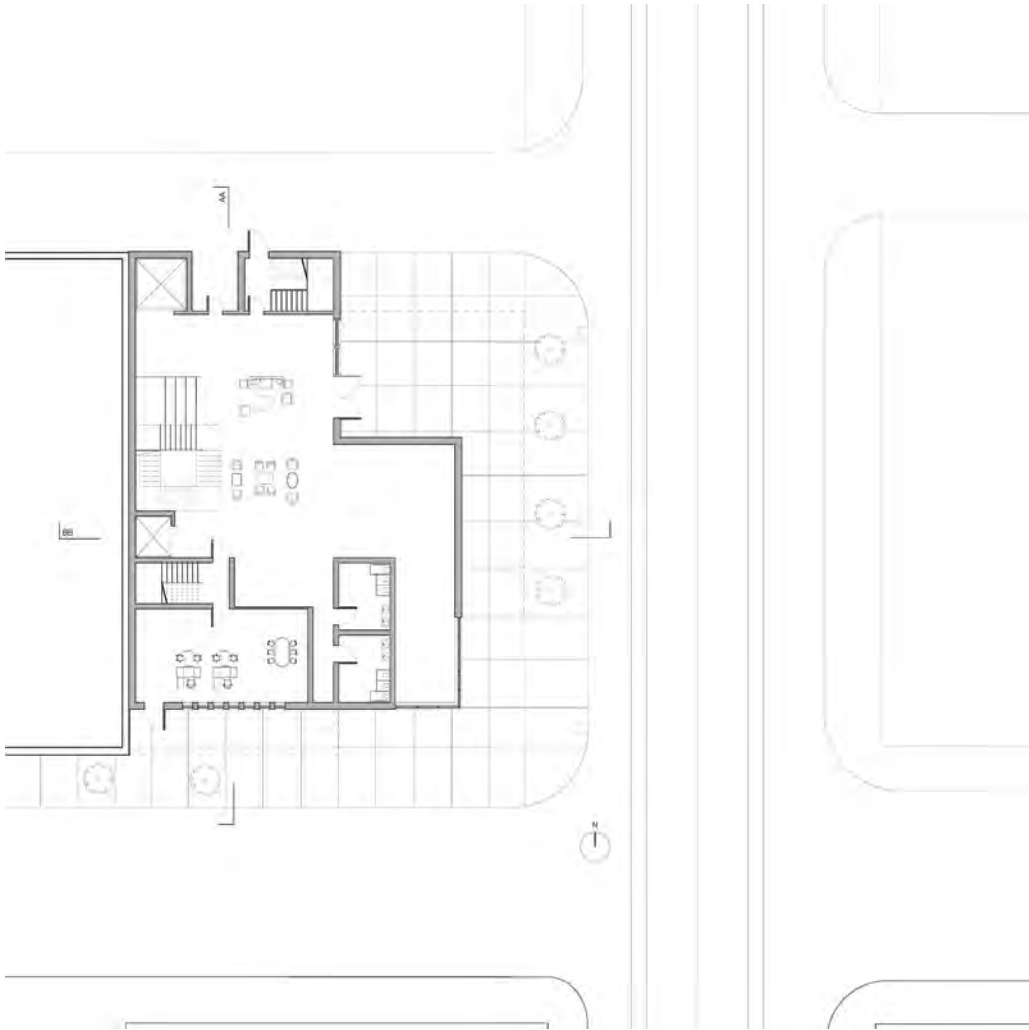
Concept



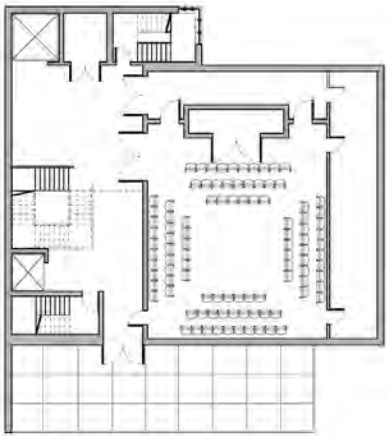
Site Analysis



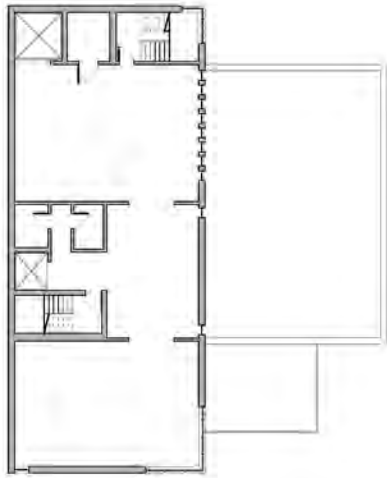




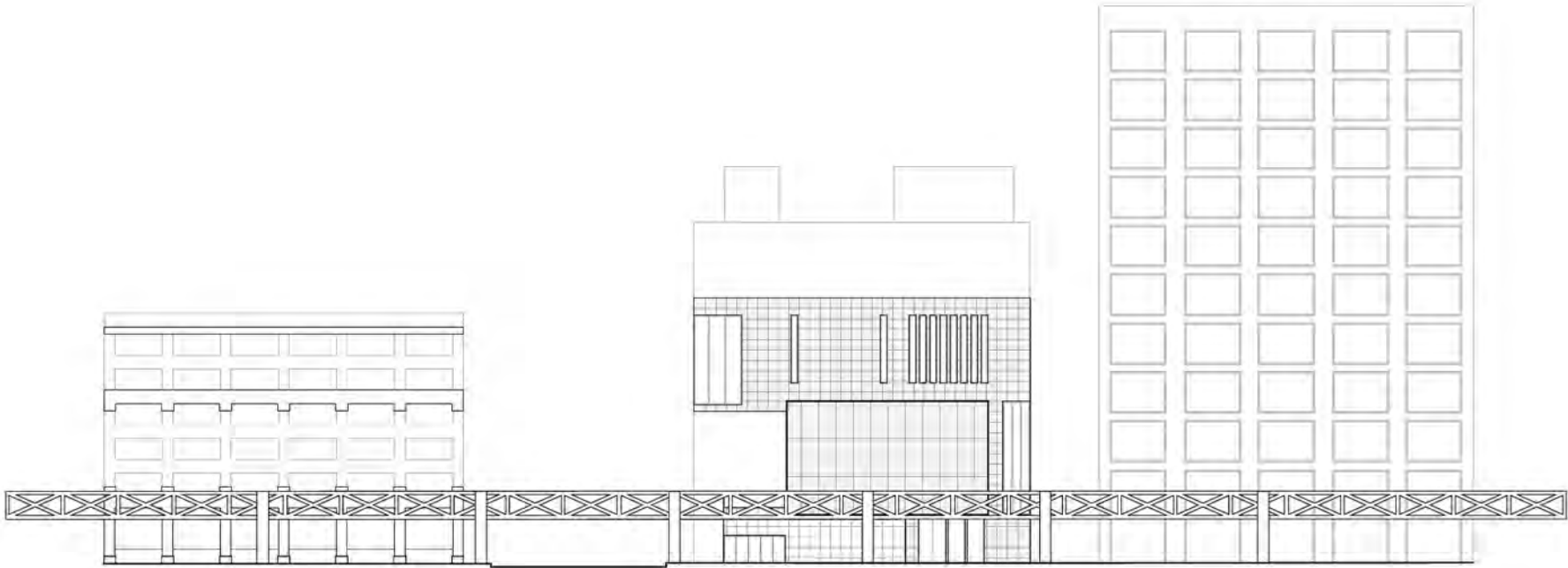
Ground Floor Plan



First Floor Plan



Second Floor Plan



Franklin St Elevation

Shifting Mass

Fayetteville Natatorium

Shifting a Heavy Mass to Bring In Light and

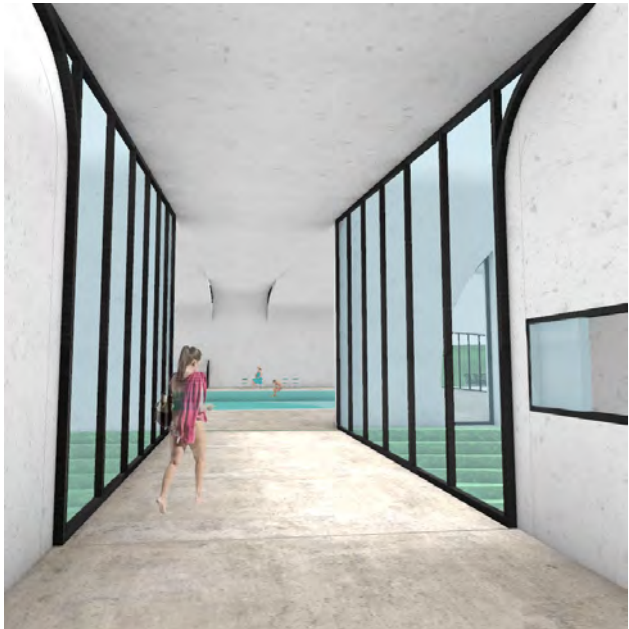
Spanning the Water for Connection



Lobby



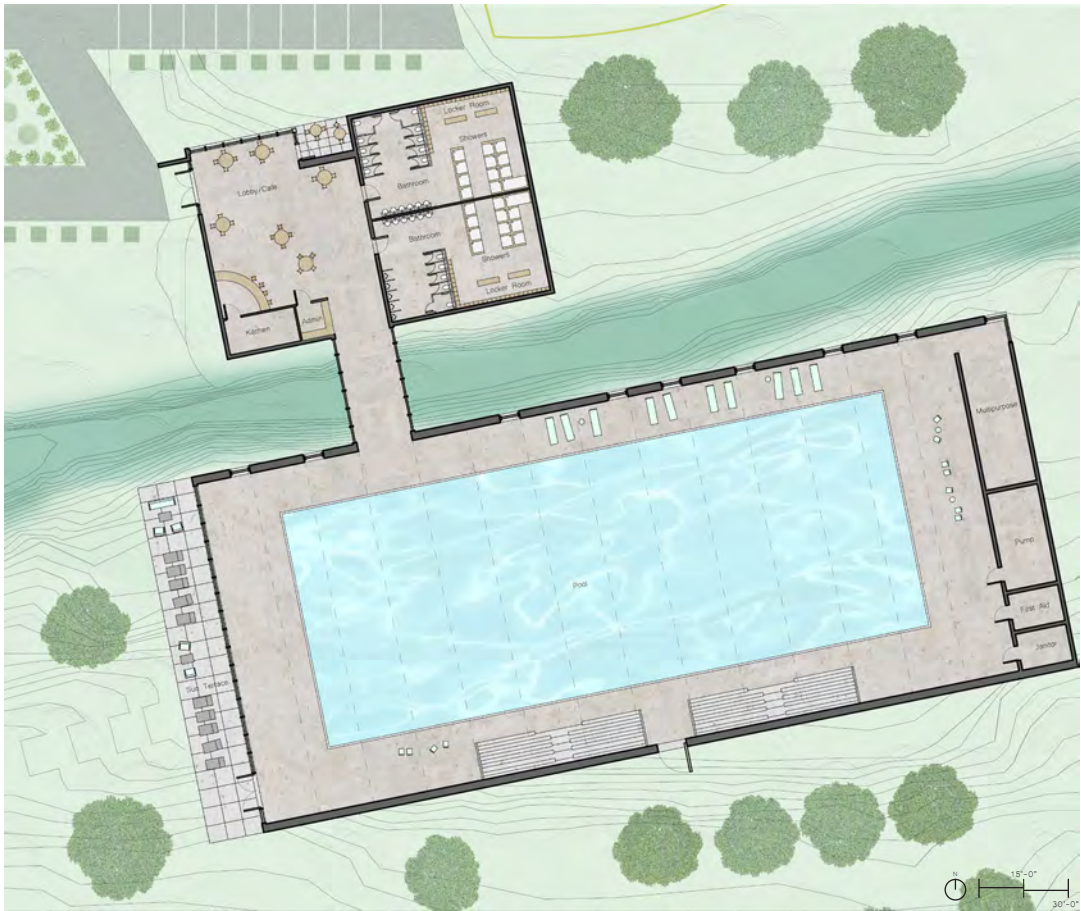
Entry



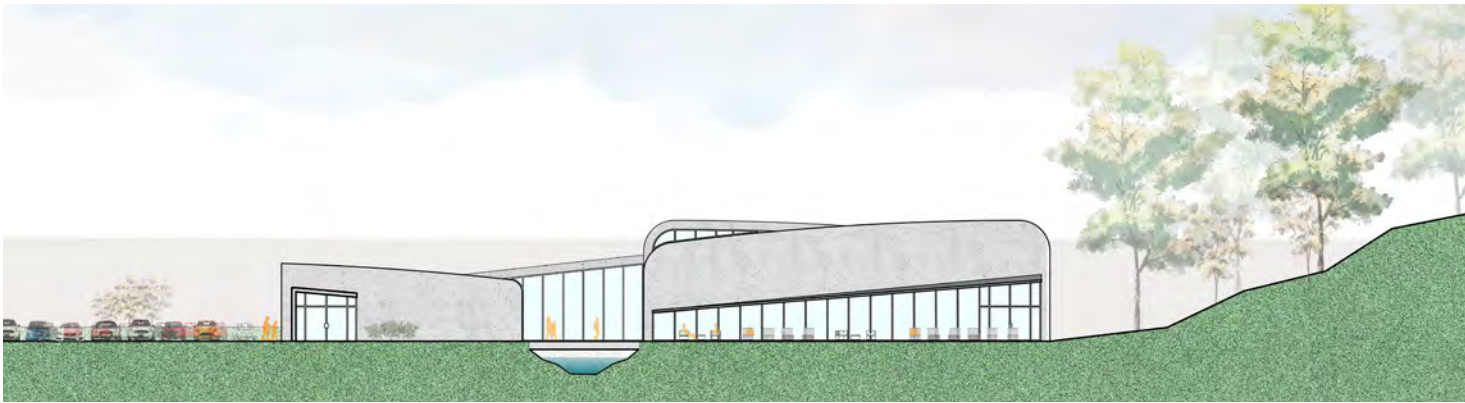
Pool Entry



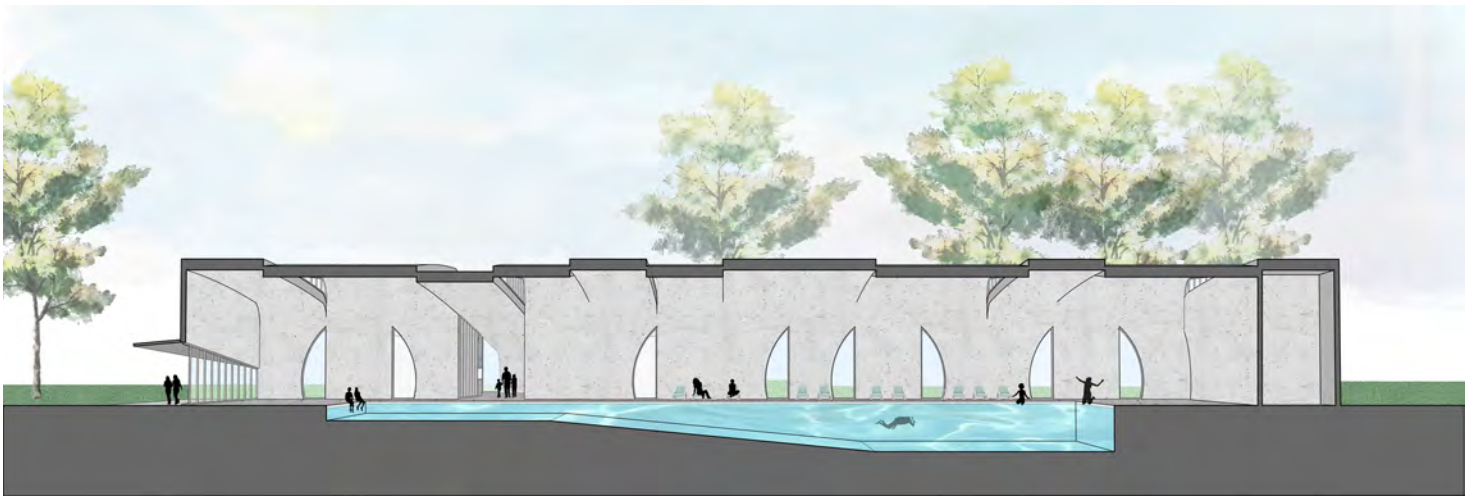
Pool



Plan



Fayetteville Natatorium



Section Perspective

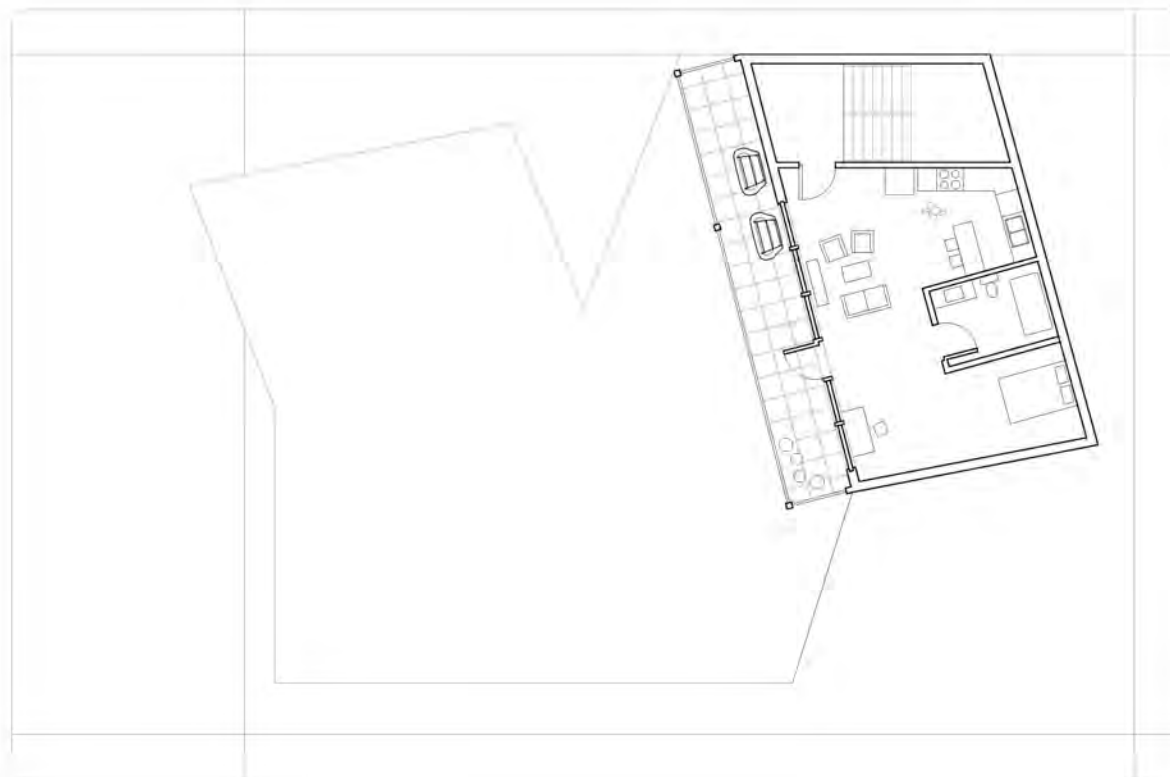
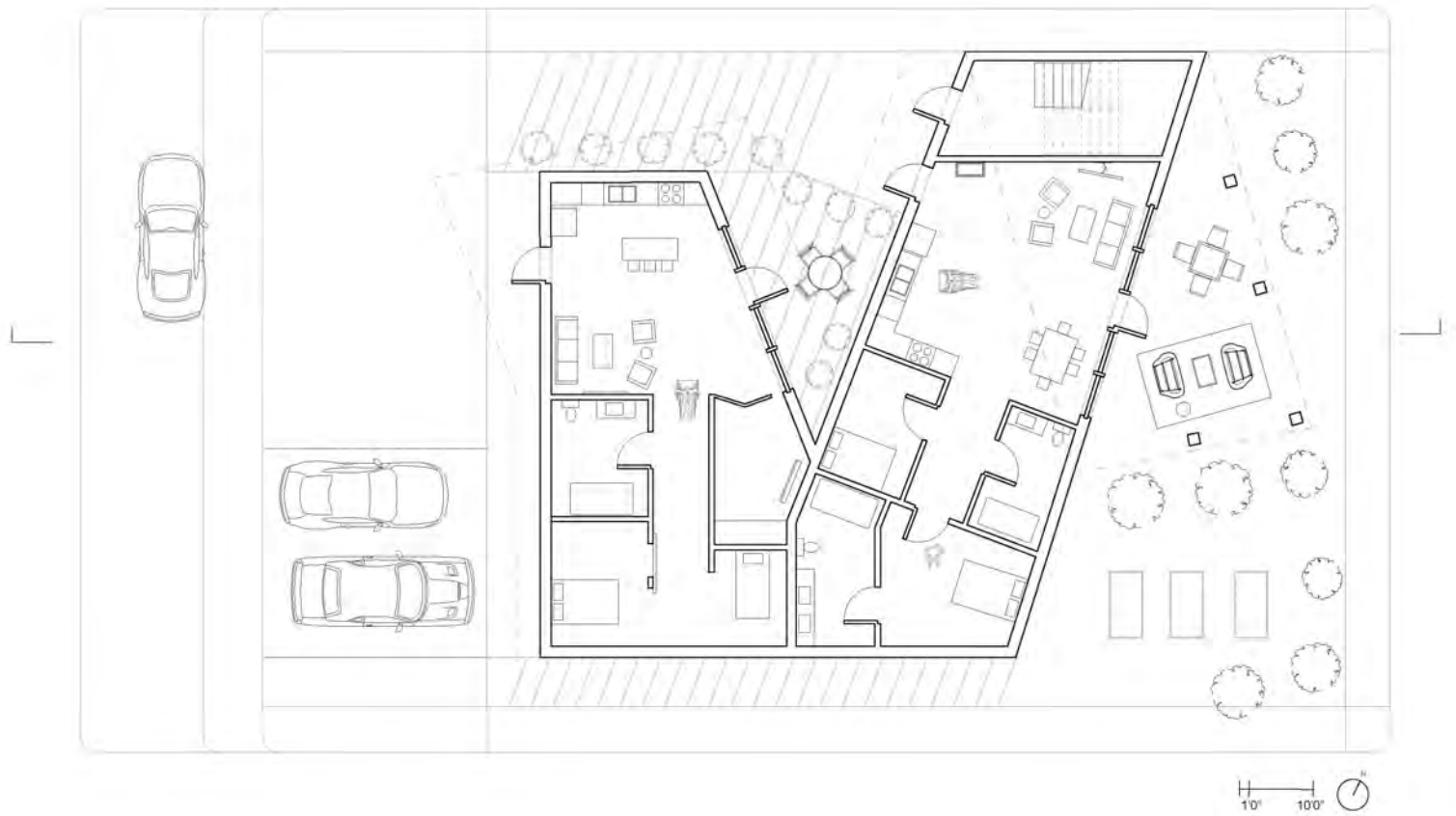
Third Year Design

Mar Vista Triplex

Los Angeles Mar Vista Attachment

Shifting Three Forms to Create Personal Outdoor Space





Checkerboard

Los Angeles High Density Housing

Double-Loaded Corridor Allows Relation to Large Social
Area that Connects Individual Communities



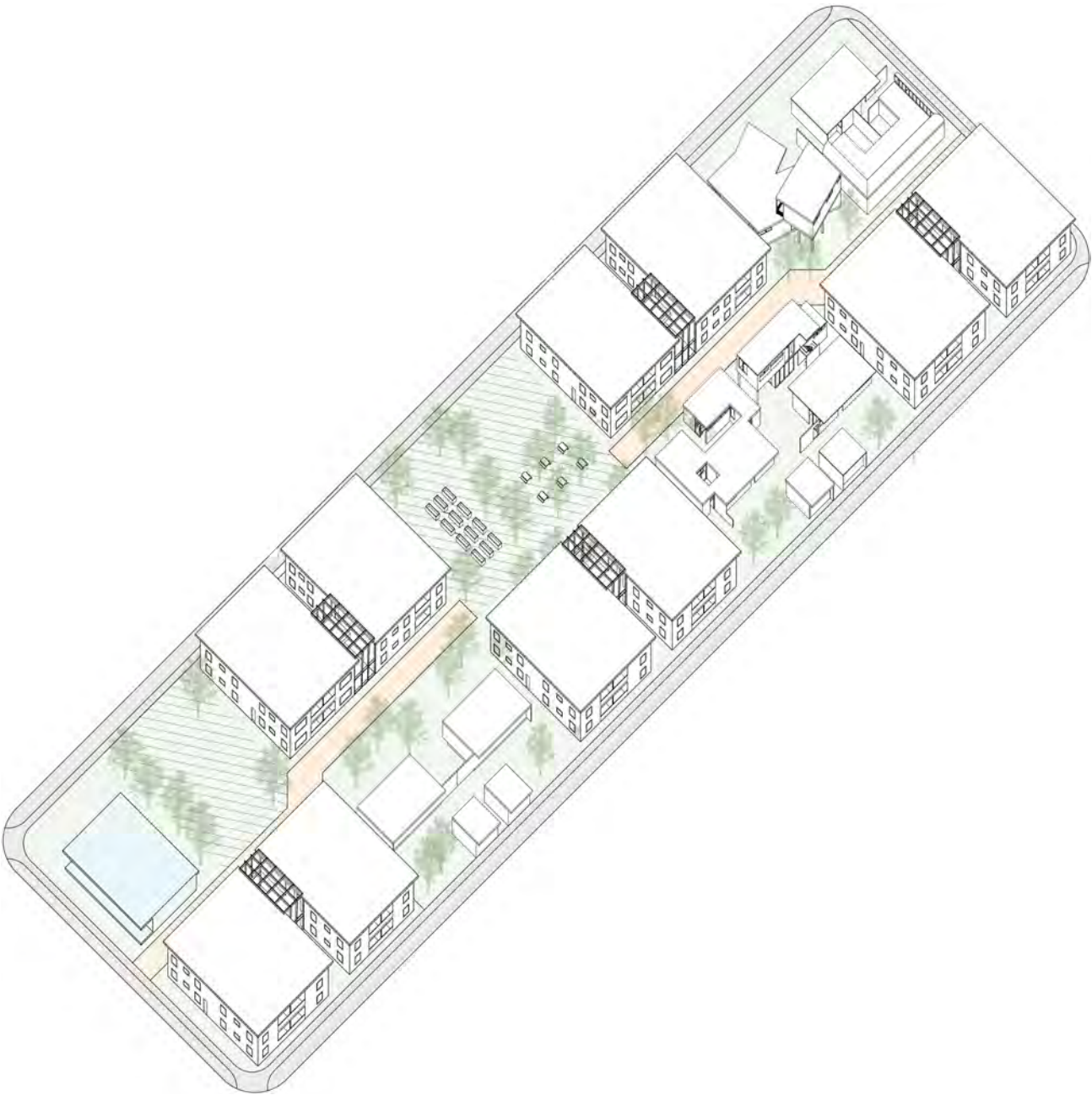
Interior Pathway Perspective



Street Perspective



Master Plan



Master Axon



Section

Reflection

Atomic Bomb Memorial in Marshall Islands

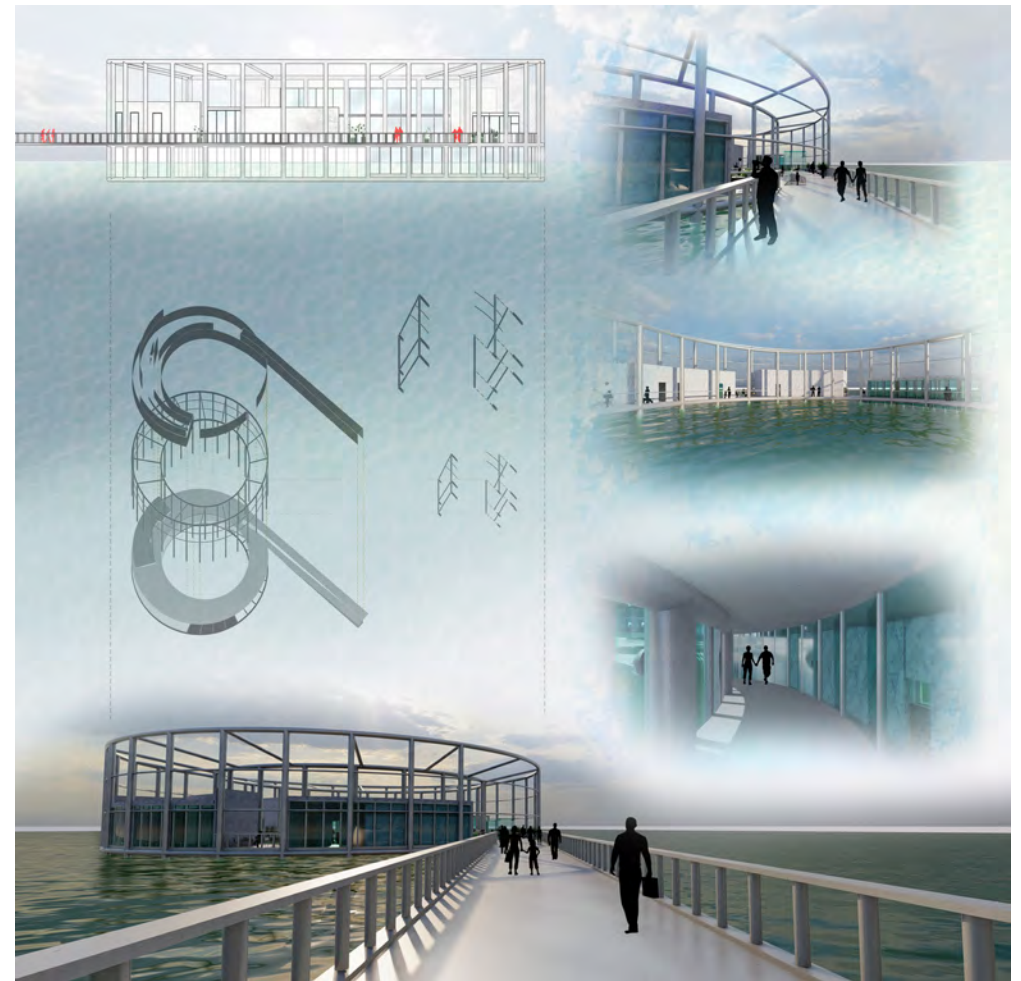
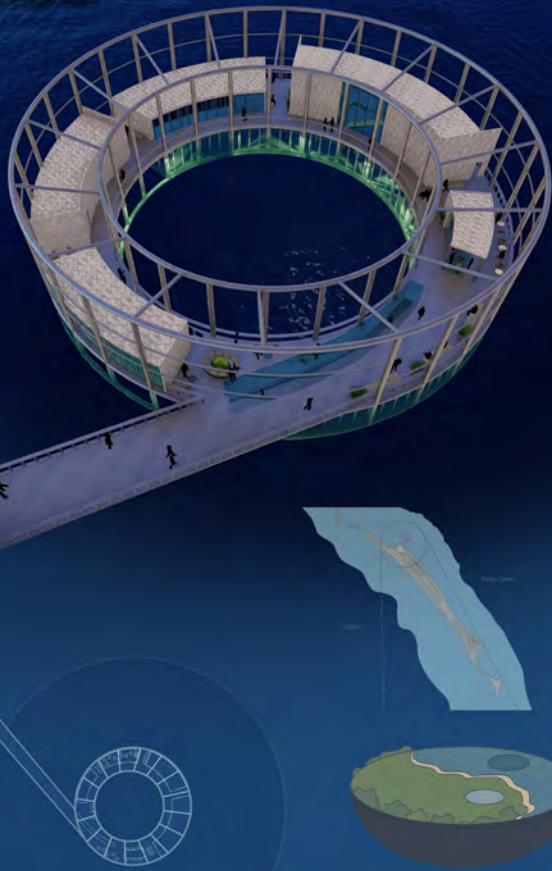
Site Becomes Architecture



Beebreeders Competition

Enewetak Atoll Memorial

Our goal is to memorialize the Marshallese story and their first hand experiences with nuclear weapons. Their lives were uprooted. They became human test subjects. This caused many to have cancer and there was a lack of access to healthcare for chemo treatments. People were relocated from island to island and still remain displaced. By using the Runit Island site, we can utilize the changes created on the site by the bombs. There is a sense of tangibility to the past to remember the harmful experience. The Marshallese people do not want their story to be lost, as they never received justice. We want to take their pain and displacement and create a memorial that invites inclusion and awareness so people can know their history. The goal is simplicity, dematerialization, and emphasis on this unique site.

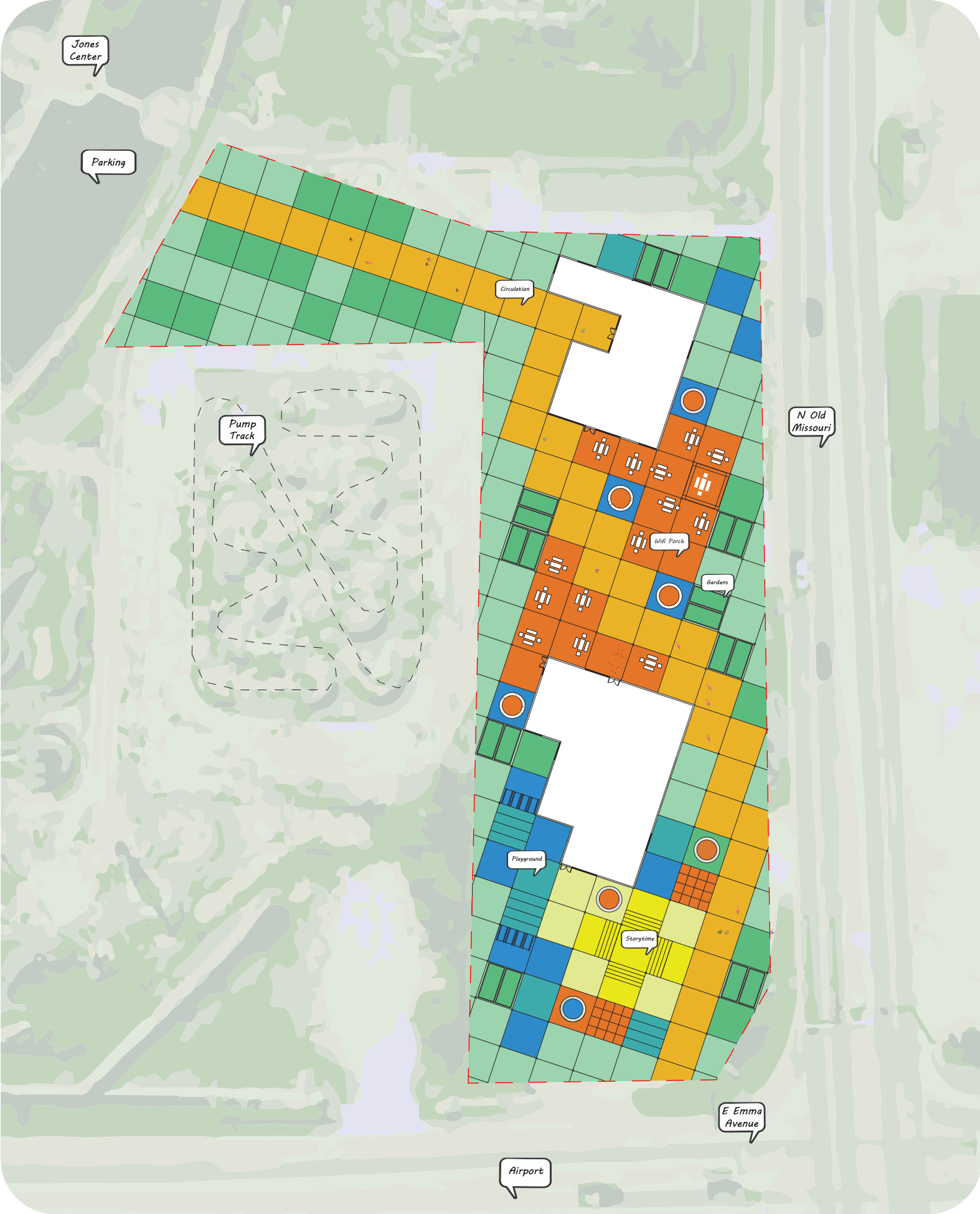


Fourth Year Design

Datum of Color

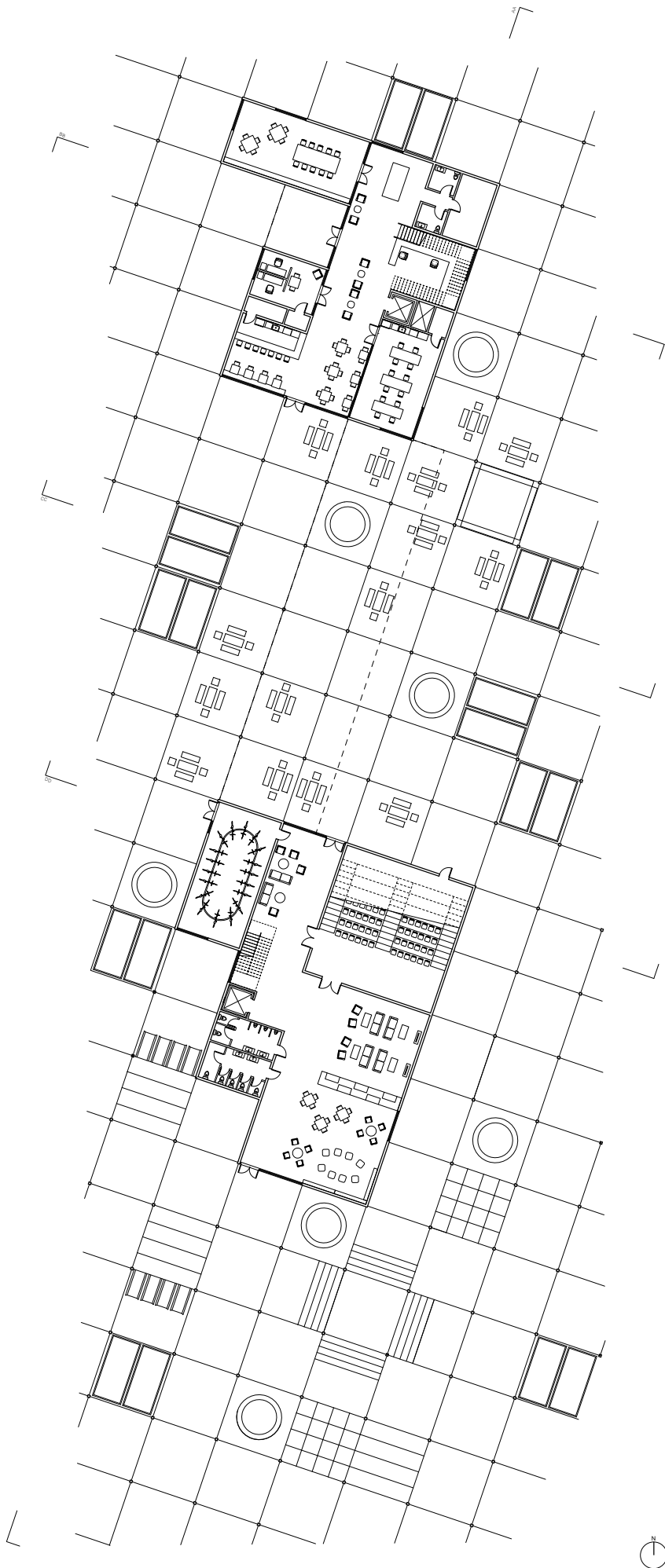
Springdale Library

Structure, Color, and Abstraction

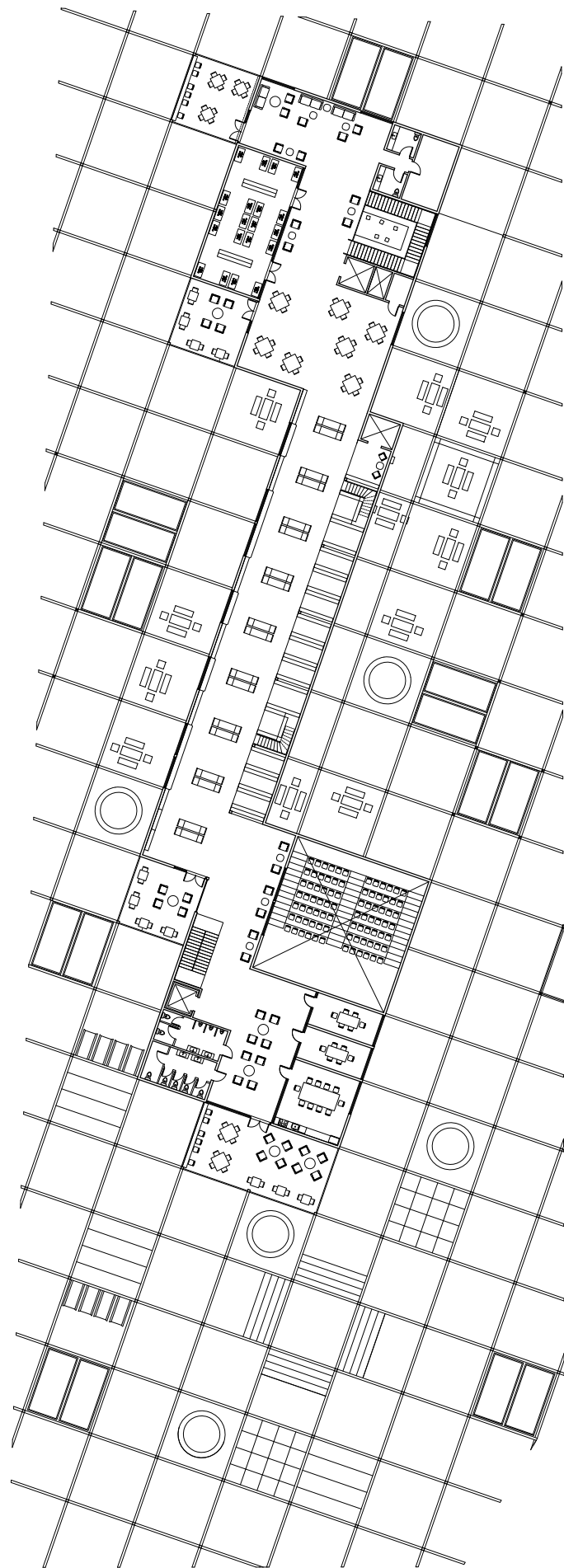


Site Plan





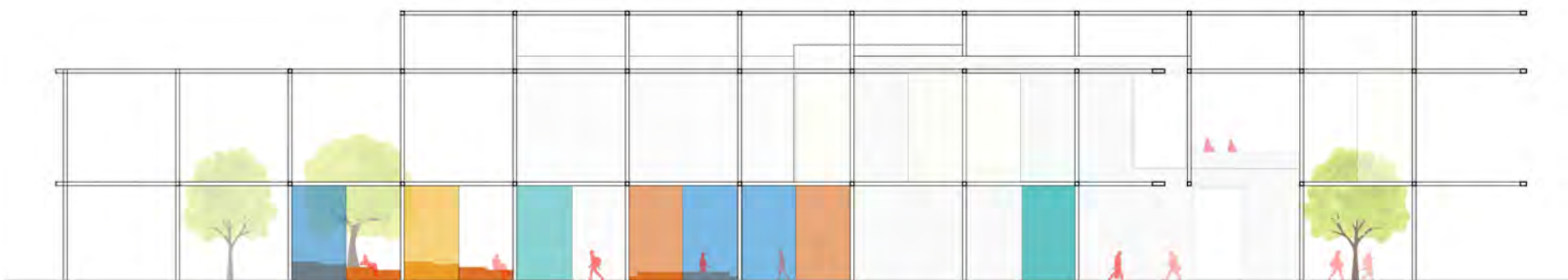
Ground Floor Plan



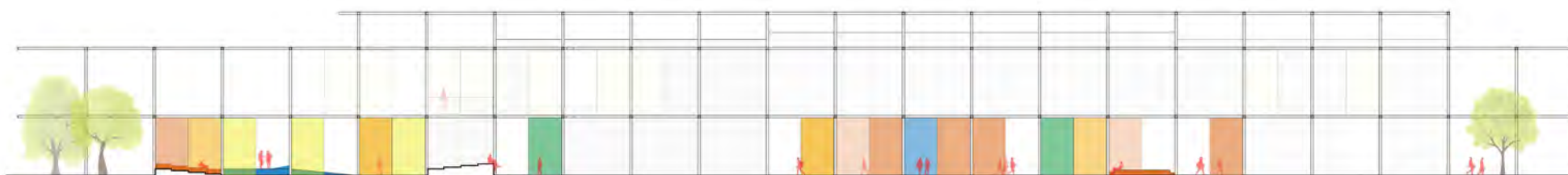
First Floor Plan



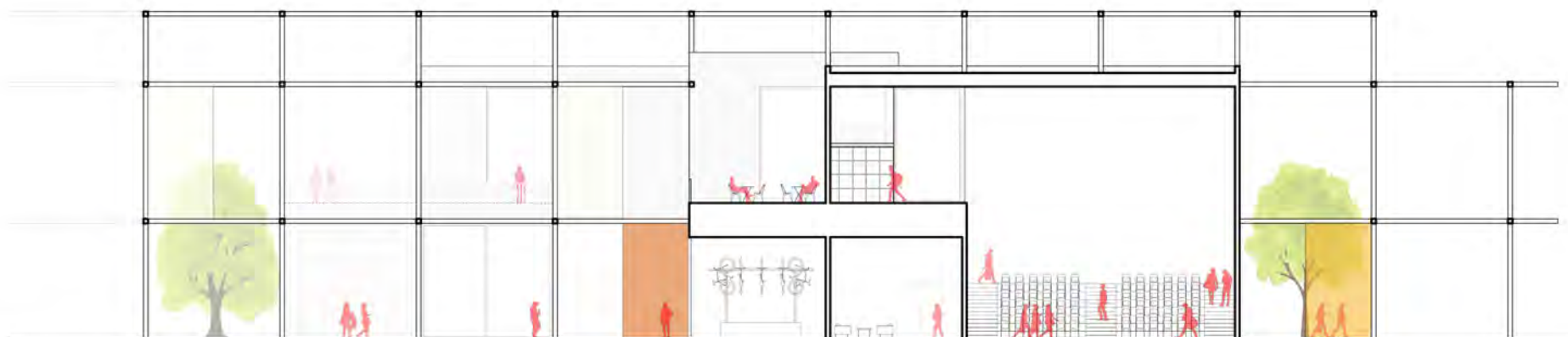
Section AA



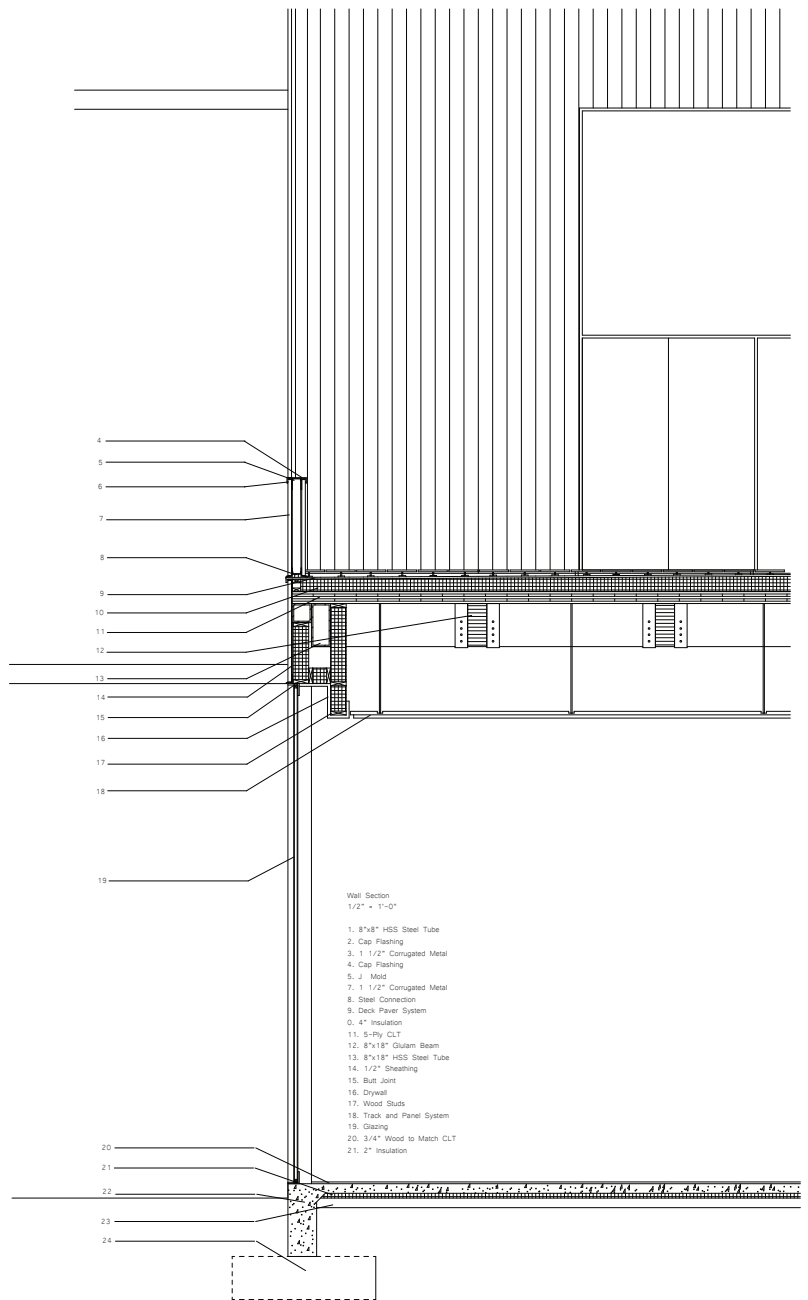
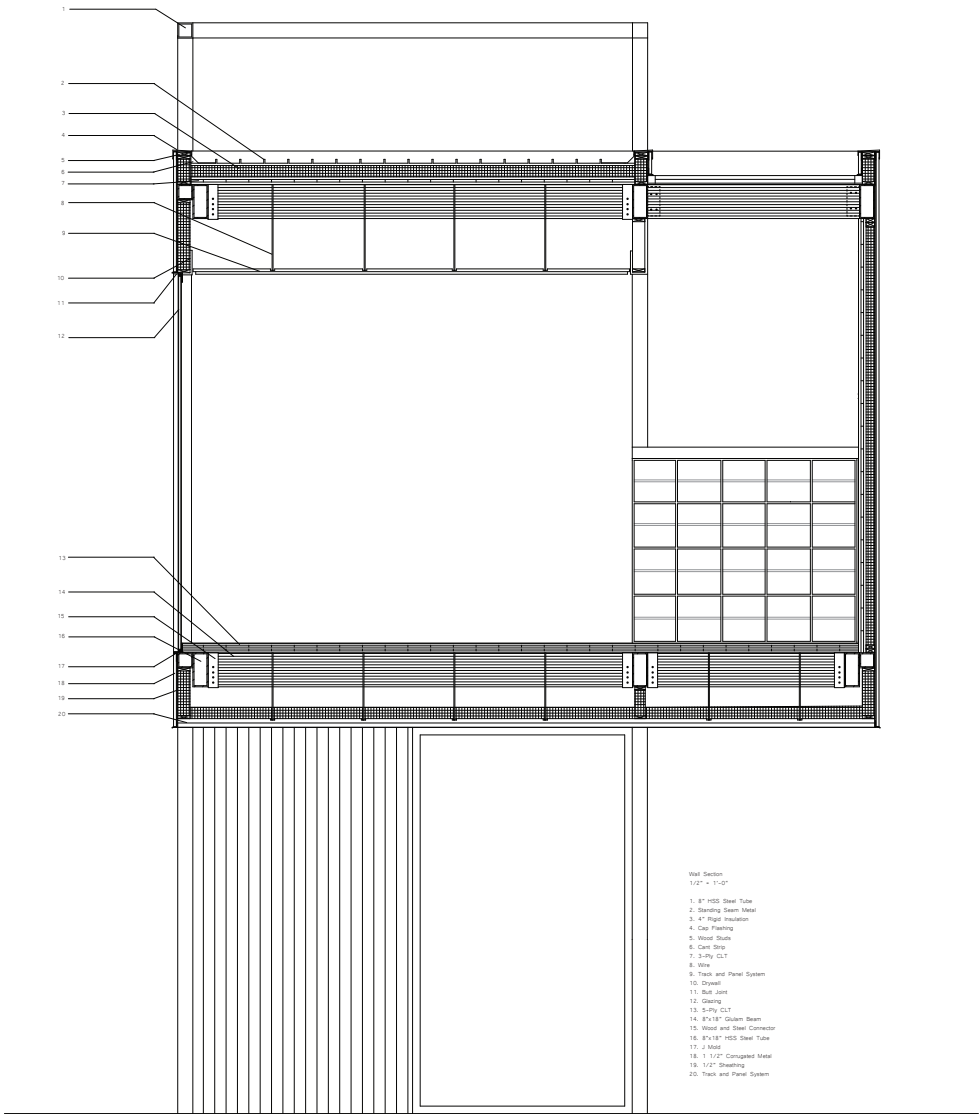
North Elevation



East Elevation



Section DD





Cafe



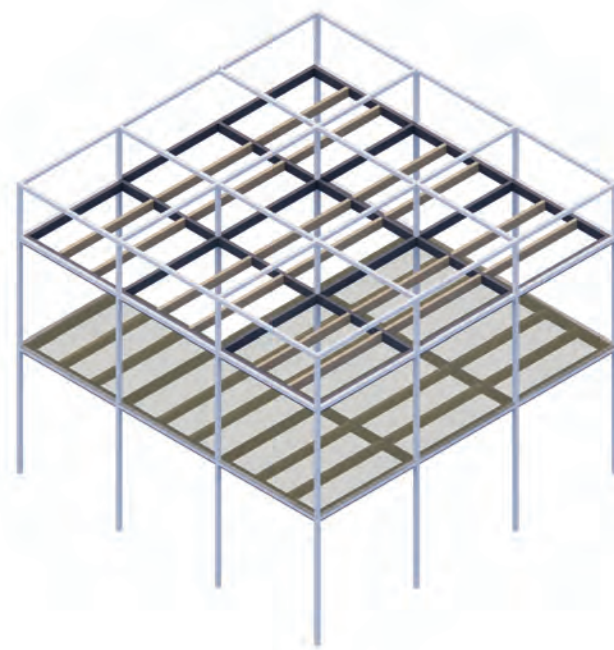
Child and Teen Space

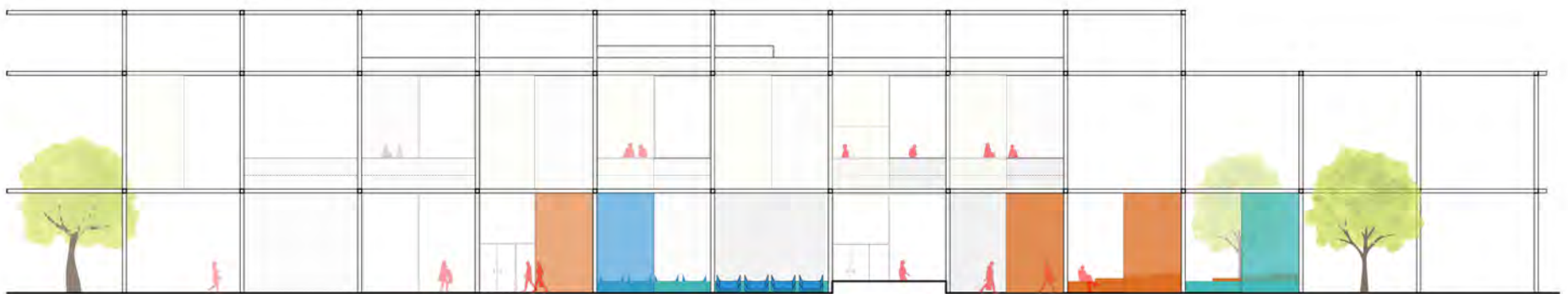


Lobby



Theater



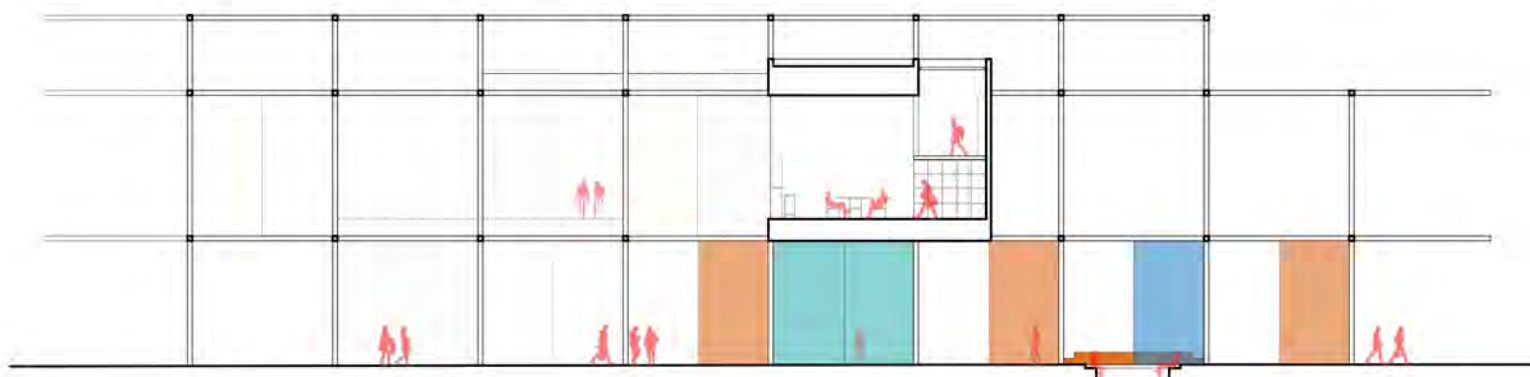


South Elevation





Book Spine



Section CC



Mezzanine

